

Seasalter, Whitstable

£450,000 Freehold

...for Coastal, Country & City living.



Zoopla

Smarter property search

rightmove

PrimeLocation.com

• 95/97 Tankerton Road . Whitstable . Kent CT5 2AJ . t: 01227 266441 . f: 01227 266443

e: sales@christopherhodgson.co.uk, lettings@christopherhodgson.co.uk . www.christopherhodgson.co.uk

Estate agency services are provided by Christopher Hodgson Limited, a company incorporated and registered in England and Wales with the number 07108955 whose registered office address is at Camburgh House, 27 New Dover Road, Canterbury, Kent CT1 3DN. Lettings and valuations are provided by Christopher Hodgson and Helen Hodgson trading as Christopher Hodgson.

Seasalter, Whitstable

280 Faversham Road, Seasalter, Whitstable, Kent, CT5 4BN

* VIDEO TOUR AVAILABLE*

An opportunity to acquire a brand new contemporary detached house in an exclusive location, commanding far reaching panoramic views of Seasalter Marshes to the South, and across Whitstable bay and the Isle of Sheppey to the North.

The spacious accommodation has been finished to a high specification throughout and is arranged on the ground floor to provide a generous living room with bi-folding doors opening to a spacious South facing balcony, a sleek modern kitchen, utility room and a cloakroom. The first floor comprises two double bedrooms, each with a stylish en-suite shower room. Bedroom one enjoys views over the marshes whilst bedroom two provides views towards the sea. The property also benefits from a large basement.

A driveway to the front of the house provides off road parking for several vehicles. 10 year new build warranty. No onward chain.



Location

Faversham Road is in a popular location on the outskirts of Whitstable, located opposite the picturesque Seasalter marshes which form part of the South Swale SSSI. It is an easy walk via the beach into Whitstable, an increasingly popular and fashionable town by the sea which enjoys a variety of shopping, educational and leisure amenities including sailing, watersports, birdwatching and walking as well as the working harbour and seafood restaurants for which it has become renowned. Whitstable mainline railway station offers fast and frequent services to London (Victoria) approximately 80 minutes and the surrounding area. The high speed Javelin service provides access to London (St Pancras) with a journey time of approximately 73 minutes. The A299 is also easily accessible offering access to the A2/ M2 linking to the channel ports and subsequent motorway network.

Accommodation

The accommodation and approximate measurements are:

• Entrance Hall

• Living Room

19'3" x 16'4" (5.88m x 4.97m)
at maximum points.

• Balcony

26'10" x 6'7" (8.17m x 2.00m)
at maximum points

• Kitchen

14'7" x 12'11" (4.44m x 3.93m)
at maximum points,

• Utility Area

12'11" x 4'6" (3.94m x 1.37m)
at maximum points.

Warranty

10 year new build warranty

• Bedroom 1

15'7" x 13'4" (4.75m x 4.06m)
at maximum points.



• **En-Suite Shower Room**
6'4" x 4'9" (1.93m x 1.45m)
at maximum points.

• **Bedroom 2**
13'4" x 13'1" (4.07m x 4.00m)
at maximum points.

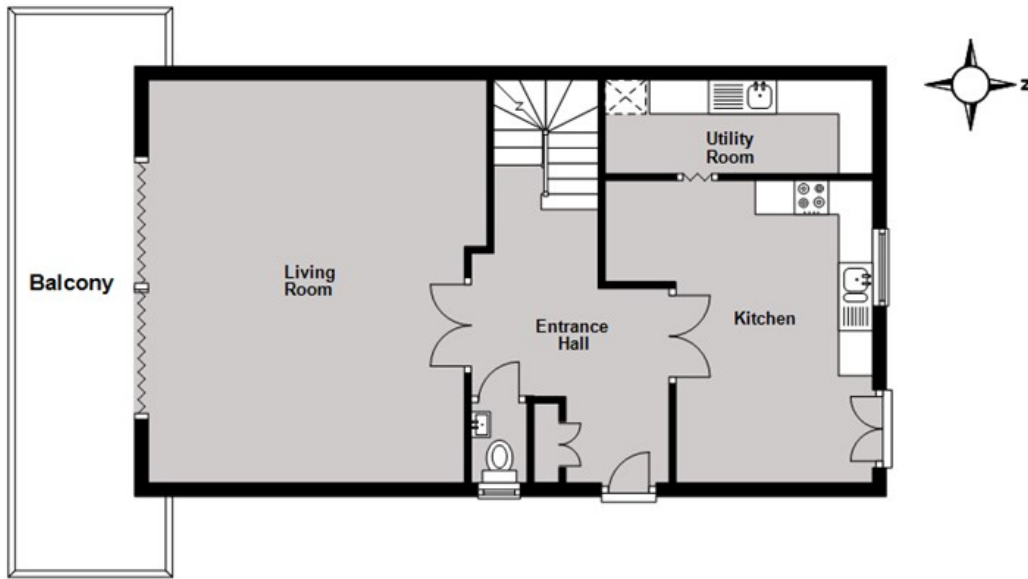
• **En-Suite Shower Room**
5'2" x 4'9" (1.57m x 1.45m)
at maximum points.

• **Basement**
35' x 6'7" (10.67m x 2.01m)
at maximum points.

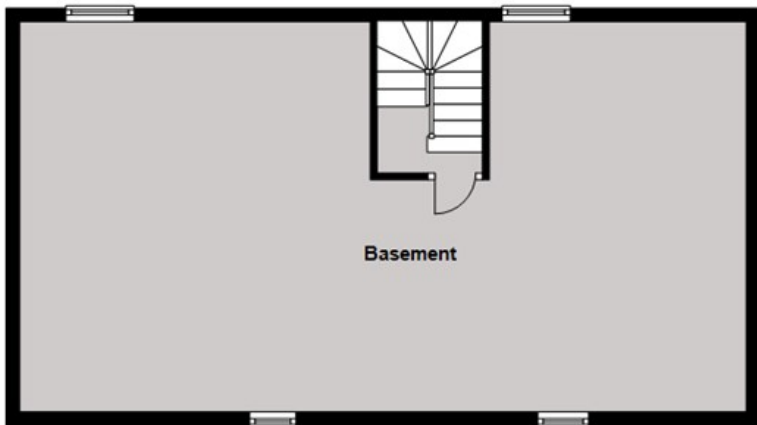
Video Tour Available
We won't let social distancing measures stop you from seeing this property. Please view the video tour for this property, and contact us to discuss arranging a physical viewing.



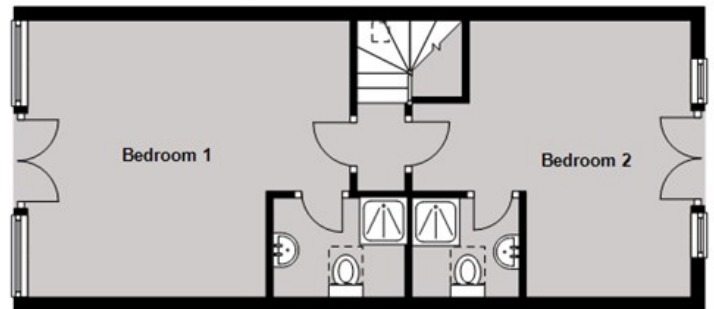
Ground Floor
Approx. 71.7 sq. metres (771.3 sq. feet)



Basement
Approx. 62.3 sq. metres (670.3 sq. feet)



First Floor
Approx. 43.2 sq. metres (465.5 sq. feet)



Total area: approx. 177.2 sq. metres (1907.1 sq. feet)

Council Tax Band to be confirmed.

Viewing: STRICTLY BY APPOINTMENT WITH AGENTS . t: 01227 266441

Christopher Hodgson Estate Agents for itself and as for the vendor or lessor (as appropriate) gives notice that: 1 These particulars are only a general outline for the guidance of intending purchasers or lessees and do not constitute in whole or in part an offer or a Contract. 2 Reasonable endeavours have been made to ensure that the information given in these particulars is materially correct but any intending purchaser or lessee should satisfy themselves by inspection, searches, enquiries and survey as to the correctness of each statement. 3 All statements in these particulars are made without responsibility on the part of Christopher Hodgson Estate Agents or the vendor or lessor. 4 No statement in these particulars is to be relied upon as a statement or representation of fact. 5 Neither Christopher Hodgson Estate Agents nor anyone in its employment or acting on its behalf has authority to make any representation or warranty in relation to this property. 6 Nothing in these particulars shall be deemed to be a statement that the property is in good repair or condition or otherwise nor that any services or facilities are in good working order. 7 Photographs may show only certain parts and aspects of the property at the time when the photographs were taken and you should rely upon actual inspection. 8 No assumption should be made in respect of parts of the property not shown in photographs. 9 Any areas, measurements or distances are only approximate. 10 Any reference to alterations or use is not intended to be a statement that any necessary planning, building regulation, listed building or any other consent has been obtained. 11 Amounts quoted are exclusive of VAT if applicable. 12 Whilst reasonable endeavours have been made to ensure the accuracy of any floor plan contained in these particulars, all measurements and areas are approximate and no responsibility is taken for any error, omission or mis-statement. This plan is for illustrative purposes only and should be used as such by any prospective purchaser. 13 Any mapping contained within these particulars is for illustrative purposes only and should be used as such by any prospective purchaser. No responsibility is taken for any error, omission or mis-statement. 14 Any computer generated images contained within these particulars are for illustrative purposes only and should be used as such by any prospective purchaser.

